

# Distributor Injection Pump

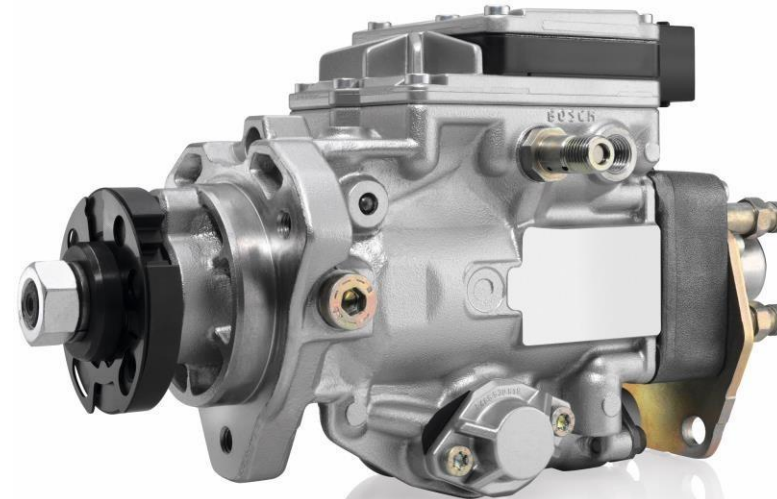
## CRITERIA

Identification

Completeness

Mechanical damage

Corrosion



# Distributor Injection Pump

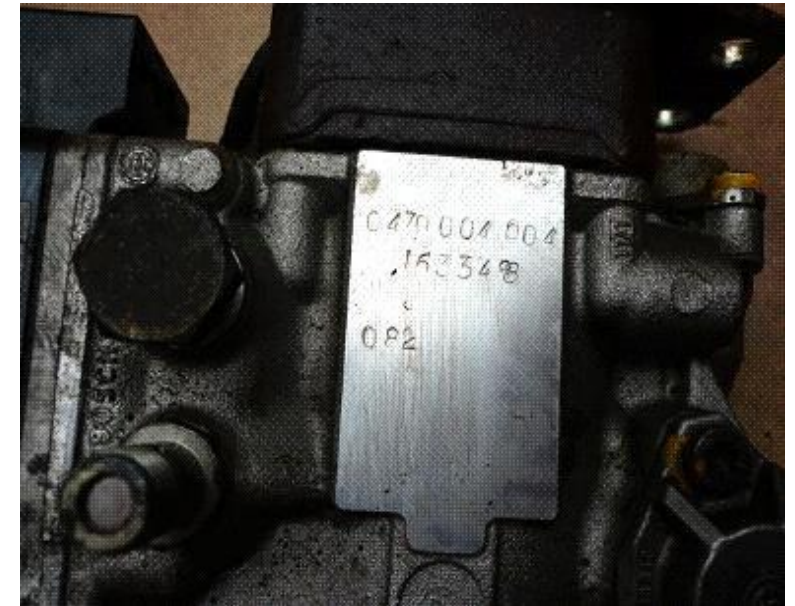
## CRITERIA

### Identification

Part Number Must Be Visible



Acceptable



Not Acceptable

# Distributor Injection Pump

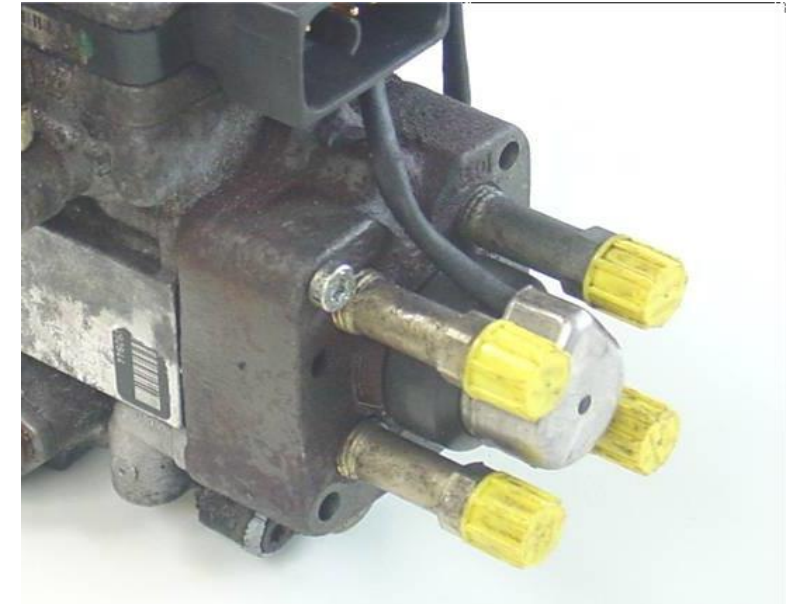
## CRITERIA

### Completeness

With or Without HP  
Connections Are Acceptable



Acceptable



Acceptable

# Distributor Injection Pump

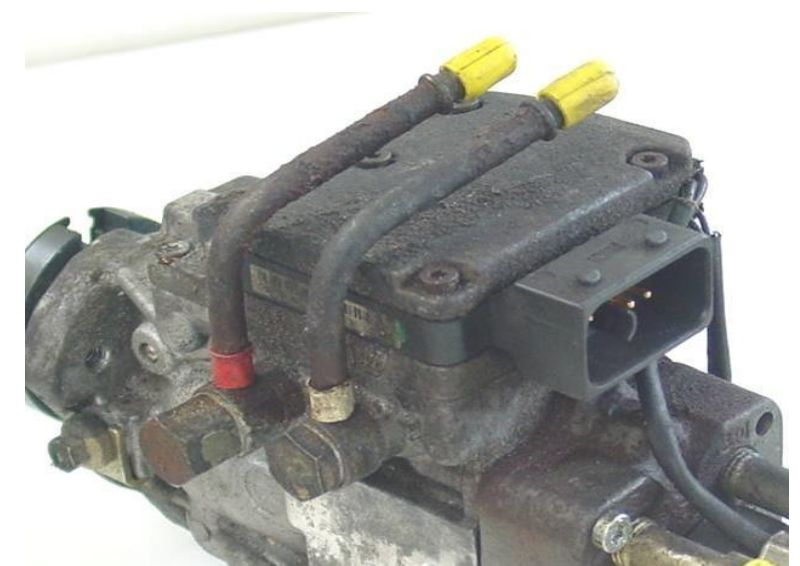
## CRITERIA

### Completeness

Return With And Without Relief Valve Are Acceptable



Acceptable



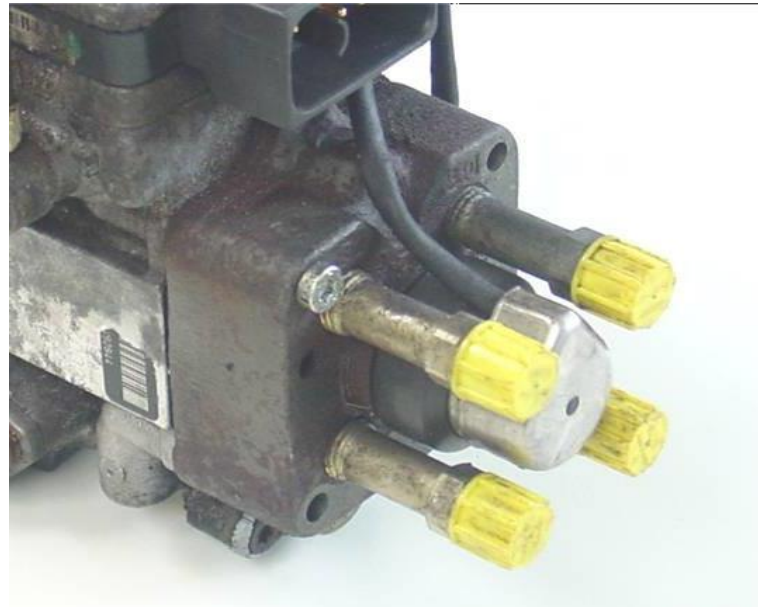
Acceptable

# Distributor Injection Pump

## CRITERIA

### Completeness

Return Without Electrical Sensor Or Solenoid Is Not Acceptable



Acceptable



Not Acceptable

# Distributor Injection Pump

## CRITERIA

### Completeness

Dismantled Core Is Not Acceptable



Acceptable



Not Acceptable

## Distributor Injection Pump

### CRITERIA

#### Mechanical Damage

Damage On Housing Or  
Damage On Thread Is  
Acceptable



Acceptable



Acceptable

# Distributor Injection Pump

## CRITERIA

### Mechanical Damage

Damage On Cables ,Cutting Or Provisionally Repaired Are Not Acceptable



Acceptable



Not Acceptable



# Distributor Injection Pump

## CRITERIA

### Mechanical Damage

Broken Connectors Are Not Acceptable



Acceptable



Not Acceptable

# Distributor Injection Pump

## CRITERIA

### Corrosion

No Corrosion Or Separated Corrosion Spots Is Acceptable.



Acceptable



Acceptable